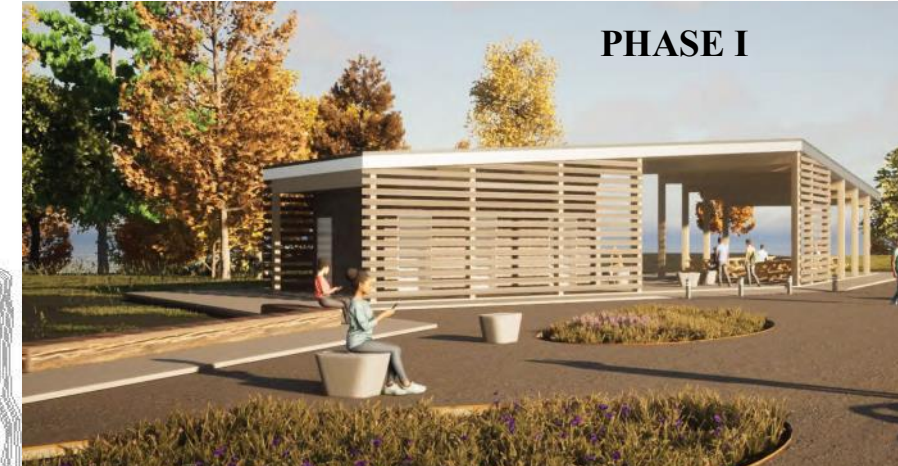
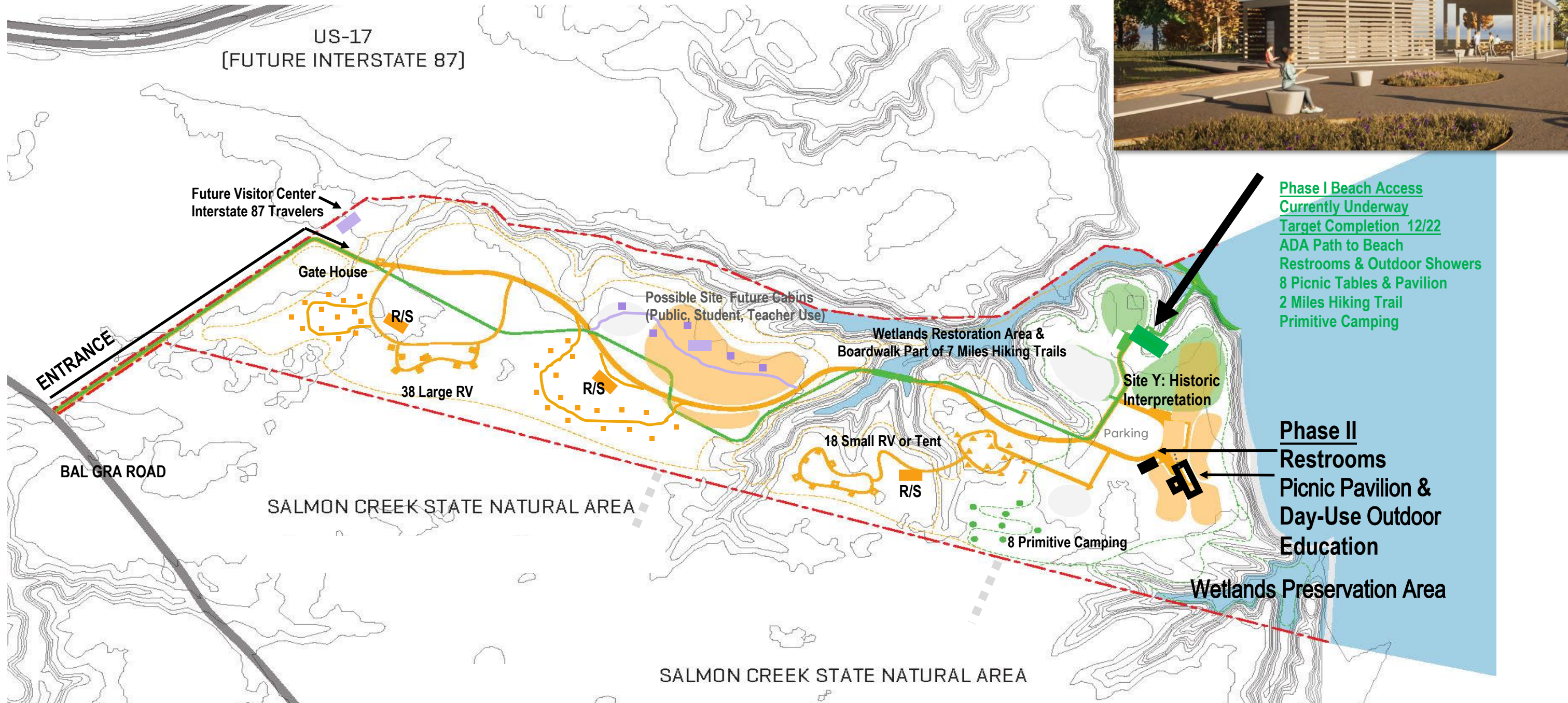


Bertie County's Tall Glass of Water Project



Phase I Beach Access
 Currently Underway
 Target Completion 12/22
 ADA Path to Beach
 Restrooms & Outdoor Showers
 8 Picnic Tables & Pavilion
 2 Miles Hiking Trail
 Primitive Camping

Phase II
 Restrooms
 Picnic Pavilion &
 Day-Use Outdoor
 Education

TGOW Partners - Phase I Beach Access

